

测试报告

编号 : SZIN1508008415PC_CN

日期 : 2015-09-10

页码 : 1 of 4

客户名称: 东莞市恒驰五金饰品有限公司

客户地址: 广东省东莞市长安镇锦厦振兴街二巷3号

下列样品由客户提供及确认:

样品名称 : 金属吊坠
SGS 参考号 : SHAHG1517442201
收样日期 : 2015-08-25
测试开始时间 : 2015-08-25
测试结束时间 : 2015-09-10
测试结果 : 请见下页

通标标准技术服务有限公司深圳分公司
检测中心
授权签名



李腊元

授权签字人



This document is issued by the Company subject to its General Conditions of Service printed overleaf, available on request or accessible at <http://www.sgs.com/en/Terms-and-Conditions.aspx> and, for electronic format documents, subject to Terms and Conditions for Electronic Documents at <http://www.sgs.com/en/Terms-and-Conditions/Terms-e-Document.aspx>. Attention is drawn to the limitation of liability, indemnification and jurisdiction issues defined therein. Any holder of this document is advised that information contained hereon reflects the Company's findings at the time of its intervention only and within the limits of Client's instructions, if any. The Company's sole responsibility is to its Client and this document does not exonerate parties to a transaction from exercising all their rights and obligations under the transaction documents. This document cannot be reproduced except in full, without prior written approval of the Company. Any unauthorized alteration, forgery or falsification of the content or appearance of this document is unlawful and offenders may be prosecuted to the fullest extent of the law. Unless otherwise stated the results shown in this test report refer only to the sample(s) tested and such sample(s) are retained for 30 days only.

Attention: To check the authenticity of testing /inspection report & certificate, please contact us at telephone: (86-755) 8307 1443, or email: CN.Doccheck@sgs.com

SGS-CALIBRATED Standards Technical Services Co., Ltd.
Shenzhen Branch, Materials Laboratory.

SGS Bldg. No. 4, Jianghao Industrial Park, No. 430, Jihua Road, Bantian, Longgang District, Shenzhen, China 518129 t (86-755) 25328282 f (86-755) 83197625 www.sgs.com.cn
中国·深圳·龙岗区坂田吉华路430号江灏工业园4栋SGS大楼 邮编: 518129 t (86-755) 25328282 f (86-755) 83197625 e sgs.china@sgs.com

测试报告

编号 : SZIN1508008415PC_CN

日期 : 2015-09-10

页码 : 2 of 4

测试要求

GB 28480-2012-有害元素含量

GB 28480-2012-镍释放量

结论

符合

符合

测试结果 :

测试样品描述 : 金属带金色电镀

备注:

(1) 1 mg/kg = 0.0001%

(2) MDL = 方法检测限

(3) ND = 未检出 (< MDL)

(4) "-" = 未规定

GB 28480-2012-有害元素含量

测试方法 : 六价铬结果参照GB/T 28019-2011方法,采用UV-Vis进行分析,其他元素参照GB/T 28021-2011方法,采用ICP-OES进行分析.

测试项目	限值	单位	MDL	001
六价铬(Cr(VI))	1000	mg/kg	20	ND
总镉(Cd)	100	mg/kg	5	ND
总铅(Pb)	1000	mg/kg	20	ND
总汞(Hg)	1000	mg/kg	20	ND
总砷(As)	1000	mg/kg	20	ND
结论				符合



This document is issued by the Company subject to its General Conditions of Service printed overleaf, available on request or accessible at <http://www.sgs.com/en/Terms-and-Conditions.aspx> and, for electronic format documents, subject to Terms and Conditions for Electronic Documents at <http://www.sgs.com/en/Terms-and-Conditions/Terms-e-Document.aspx>. Attention is drawn to the limitation of liability, indemnification and jurisdiction issues defined therein. Any holder of this document is advised that information contained hereon reflects the Company's findings at the time of its intervention only and within the limits of Client's instructions, if any. The Company's sole responsibility is to its Client and this document does not exonerate parties to a transaction from exercising all their rights and obligations under the transaction documents. This document cannot be reproduced except in full, without prior written approval of the Company. Any unauthorized alteration, forgery or falsification of the content or appearance of this document is unlawful and offenders may be prosecuted to the fullest extent of the law. Unless otherwise stated the results shown in this test report refer only to the sample(s) tested and such sample(s) are retained for 30 days only.

Attention: To check the authenticity of testing /inspection report & certificate, please contact us at telephone: (86-755) 8307 1443, or email: CN.Doccheck@sgs.com

SGS Standards Technical Services Co., Ltd.
Shenzhen Branch

SGS Bldg. No. 4, Jianghao Industrial Park, No. 430, Jihua Road, Bantian, Longgang District, Shenzhen, China 518129 t (86-755) 25328282 f (86-755) 83197625 www.sgsgroup.com.cn
中国·深圳·龙岗区坂田吉华路430号江灏工业园4栋SGS大楼 邮编: 518129 t (86-755) 25328282 f (86-755) 83197625 e sgs.china@sgs.com

测试报告

编号 : SZIN1508008415PC_CN

日期 : 2015-09-10

页码 : 3 of 4

GB 28480-2012-镍释放量

测试方法 : 参照GB/T 28485-2012和GB/T 19719-2005方法, 采用AAS进行分析.

测试项目	限值	单位	MDL	001
测试溶液体积	-	ml	-	2.90
样品面积	-	cm ²	-	2.86
镍释放量- 测试 1	-	µg/cm ² / week	0.1	ND
镍释放量- 测试 2	-	µg/cm ² / week	0.1	ND
调整后的镍释放量-测试 1	0.5	µg/cm ² / week	0.01	ND
调整后的镍释放量-测试 2	0.5	µg/cm ² / week	0.01	ND
测试项目	限值	单位	MDL	001
结论				符合



This document is issued by the Company subject to its General Conditions of Service printed overleaf, available on request or accessible at <http://www.sgs.com/en/Terms-and-Conditions.aspx> and, for electronic format documents, subject to Terms and Conditions for Electronic Documents at <http://www.sgs.com/en/Terms-and-Conditions/Terms-e-Document.aspx>. Attention is drawn to the limitation of liability, indemnification and jurisdiction issues defined therein. Any holder of this document is advised that information contained hereon reflects the Company's findings at the time of its intervention only and within the limits of Client's instructions, if any. The Company's sole responsibility is to its Client and this document does not exonerate parties to a transaction from exercising all their rights and obligations under the transaction documents. This document cannot be reproduced except in full, without prior written approval of the Company. Any unauthorized alteration, forgery or falsification of the content or appearance of this document is unlawful and offenders may be prosecuted to the fullest extent of the law. Unless otherwise stated the results shown in this test report refer only to the sample(s) tested and such sample(s) are retained for 30 days only.

Attention: To check the authenticity of testing /inspection report & certificate, please contact us at telephone: (86-755) 8307 1443, or email: CN.Doccheck@sgs.com

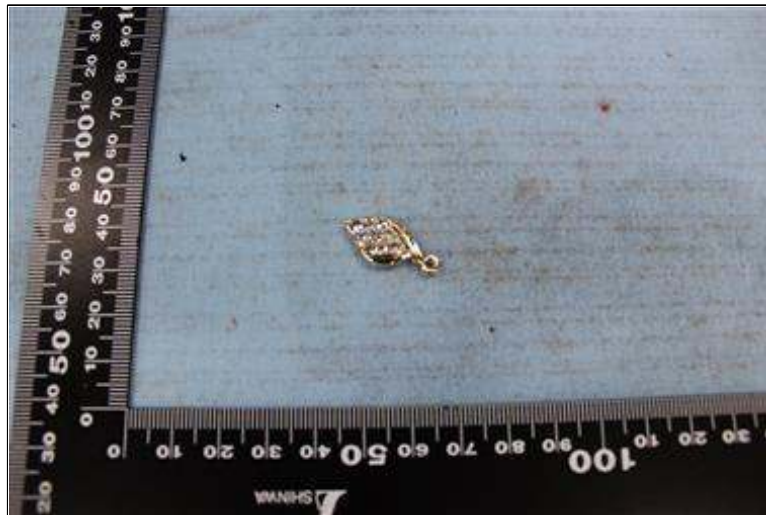
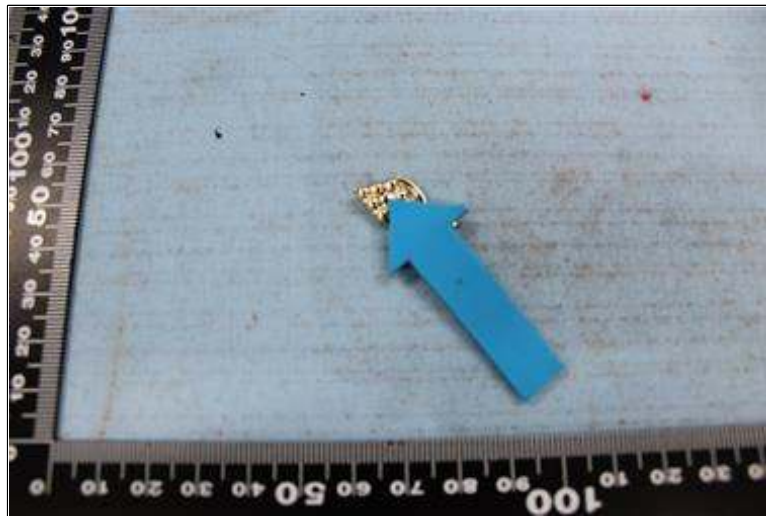
测试报告

编号 : SZIN1508008415PC_CN

日期 : 2015-09-10

页码 : 4 of 4

样品照片:



备注: 以上测试项目是在 SGS 内部实验室进行。

***** 报告结束*****